



Confédération Luxembourgeoise  
des Syndicats Chrétiens

**DECEMBER 2010**

## CREATION OF A NEW STRUCTURE FOR MEMBERSHIP ADMINISTRATION

# MEMBERSHIP ADMINISTRATION

Dear colleagues,

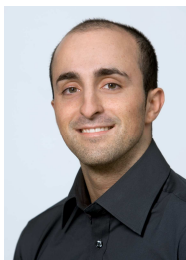
For your information, as of December 2010 all LCGB Members will be managed by a new "Membership Administration" office.

In order to improve the LCGB Member file and to handle all requests related to LCGB membership or LCGB trade union contribution, the people in charge of the "Membership Administration" office will work hand in hand with our trade union secretaries, our local sections and our representatives within the companies.

Please be so kind and address all your requests to the persons in charge of this new office:



**Liliane HELMINGER**  
**Tel: +352 49 94 24 304**  
**Email: [lhelminger@lcgb.lu](mailto:lhelminger@lcgb.lu)**  
(Luxembourgish, German,  
French, English)



**Michel BORGES**  
**Tel: +352 49 94 24 409**  
**Email: [mborges@lcgb.lu](mailto:mborges@lcgb.lu)**  
(Luxembourgish, German,  
French, English,  
Portuguese)

- Admission of new affiliations
- Change of addresses and LCGB Member file updating
- Retrieval, modification and updating of every other data related to the LCGB Member file
- Assistance for every request related to the various LCGB trade union contribution payment options (money collection, wire transfer, automatic wire transfer)

**AS OF NOW EVERY NEW AFFILIATION, EVERY LETTER, EVERY EMAIL, EVERY REQUEST AND EVERY OTHER ISSUE RELATED TO LCGB MEMBERSHIP OR LCGB TRADE UNION CONTRIBUTION MUST BE SENT TO THE FOLLOWING ADDRESSES:**

**Postal address:**

**LCGB - Membership Administration**  
11, rue du Commerce  
Boîte Postale 1208  
L-1012 Luxembourg

**Email:**

**[gestionmembres@lcgb.lu](mailto:gestionmembres@lcgb.lu)**

**Fax:**

**+352 49 94 24 49**