

01/2026

UNEMPLOYMENT



Modalities

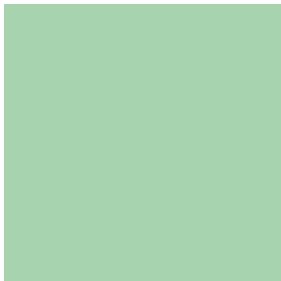
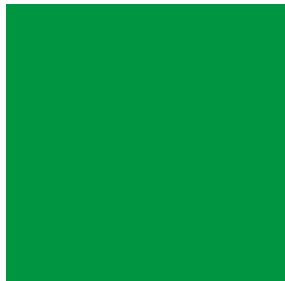
in Luxembourg, Belgium,
France and Germany

Procedures

Registering as a
jobseeker
P. 3

Benefits

Conditions to be fulfilled,
duration and amounts
P. 8



An employee who loses their job may, under certain conditions, be entitled to receive unemployment benefit. The legislation concerning unemployment in Luxembourg, Belgium, France and Germany is extremely complex; consequently, this brochure contains only basic information and a summary of the rights and obligations of the employees concerned. For more detailed information, please contact the LCGB INFO-CENTER.

SUMMARY

Registering as a jobseeker

4 Luxembourg, Belgium, France, Germany

Submitting the application for unemployment benefit

6 Luxembourg, Belgium, France, Germany

Unemployment benefit

8 Luxembourg

10 Belgium

12 France

15 Germany

LCGB INFO-CENTER

11 RUE DU COMMERCE

L-1351 LUXEMBOURG

☎ (+352) 49 94 24-222

✉ INFOCENTER@LCGB.LU

💻 WWW.LCGB.LU

A woman with long dark hair, wearing a white shirt, is seated at a desk. She is holding a black pen in her right hand and writing on a document. Her left hand is resting on the desk. The document is on a clipboard. A green banner with white text is overlaid on the image.

Registering as a jobseeker



Where



Circumstances



ADEM

 www.adem.public.lu


- Dismissal (*in cases of dismissal for serious misconduct, entitlement to unemployment benefit will only be granted where proceedings are brought for unfair dismissal*);
- Automatic termination of the employment contract;
- Termination of the employment contract on account of the death, physical incapacity or declaration of bankruptcy of the employer;
- End of a fixed-term employment contract.



Le Forem

 www.leforem.be

- End of a period of employment (dismissal, bankruptcy, etc.);
- Automatic termination of the employment contract;
- If you still have an employment contract but are looking for a new job, you can also avail yourself of the services provided by Forem.



France Travail

 www.francetravail.fr

- Cessation of the employment relationship on account of dismissal on any grounds whatsoever;
- Automatic termination of the employment contract;
- Termination of the employment contract for economic reasons (e.g. bankruptcy);
- End of a fixed-term employment contract;
- Resignation in order to follow one's spouse who has been transferred elsewhere.



Agentur für Arbeit

 www.arbeitsagentur.de

- End of a period of working (dismissal, bankruptcy, resignation on serious grounds);
- End of a fixed-term employment contract.



Time limits

As soon as the person concerned learns that they are losing their job, and by no later than the date on which the employment relationship comes to an end.



How

Register online via the platform MyGuichet.lu (after registering, you will receive an invitation to an initial appointment) or at an appointment (by appointment).

Request an appointment with the ADEM Contact Centre:

- ☎ (+352) 247 88 888



Documents

- National Insurance number
- Valid identity document or passport;
- Letter of dismissal;
- Employment contract;
- Curriculum vitae (CV);
- Proof of registration as a job seeker in your country of residence;
- Form "Personal information", to be uploaded via www.adem.public.lu

- As soon as the person concerned is in a position to look for and take up a job, and by no later than the end of the notice period;
- Parallel application for unemployment benefit. This is a precondition for receiving unemployment benefit payments;
- Max. 8 days after applying for unemployment benefit.

Registration via:

- www.leforem.be;
- ☎ +32 (0) 800 93 947;
- with a Forem counsellor;
- in the nearest *Maison de l'Emploi*.

- A file containing the applicant's contact details, skills and professional experience;
- Once you are registered, creation of a personal space;
- The file is updated via: www.leforem.be

- The day following the date of cessation of the employment relationship (end of the notice period granted, end of a fixed-term employment contract, etc.);
- End of vocational training;
- End of a period of sick leave.

Registration via:

- www.francetravail.fr ;

Following registration, you will receive a notice, either in your personal space (if you have agreed to this) or by letter, calling on you to attend an obligatory appointment. If you are re-registering, you must contact your former advisor via your personal account.

- National identity card or residence permit;
- A document showing your current address (electricity bill, rent receipt, etc.);
- Healthcare card;
- Valid e-mail address;
- Statement from the employer, certificate of employment or pay slips;
- Bank details (RIB);
- Curriculum vitae (CV).

- Within 3 months prior to the end of the employment contract;
- If the person becomes aware of the termination of the contract at a later stage: within 3 days after becoming aware and by no later than the day following the end of the contract.

By registering no later than the first day of unemployment via:

- www.arbeitsagentur.de
- ☎ 0800 4 5555 00 (this number is only accessible if calling from a German telephone number)
- or by attending in person at the nearest office of the *Agentur für Arbeit*.

- Copy of your identity card or passport together with the current postal address. In the case of third country nationals: a residence permit and a work permit;
- Social security card;
- Letter of dismissal or fixed-term contract;
- Curriculum vitae (CV).

Submitting the application for unemployment benefit



Where



After registering with ADEM as a job seeker, you will receive a letter inviting you to complete your application via the MyGuichet.lu or MyADEM platforms.

If you have not received a notification within 8 days of registering, please contact the ADEM Contact Center.



Time limits



At a payment body:

- CAPAC Public Social Security Institution;
- The CGSLB, CSC (LCGB partner) or FGTB trade unions.

- Employees may submit their application and put together their unemployment file at the end of their notice period;
- Applications for unemployment benefit must be submitted as quickly as possible and by no later than 8 days after the end of the notice period;
- In cases where no notice is required to be given, the registration must take place within 2 months from the first day of exemption from this requirement;
- Failure to submit an application by the due date may give rise to the loss of certain rights.



Automatic application: When you register at *France Travail*, you also fill out your application for return-to-work assistance (ARE).

No later than 12 months after the end of the employment contract. This period may be extended due to certain circumstances (e.g. sick leave).



At the *Agentur für Arbeit*.

The day when you register as an unemployed person is regarded as the date of the application for unemployment benefit. Additional documents are needed for the grant of the benefit, e.g. the application for unemployment benefit.



How

MyGuichet.lu and MyADEM are accessible on computers, tablets or smartphones with strong authentication (e.g. Luxtrust). People who have difficulty using computers can obtain free assistance and equipment from ADEM (for more information, please contact the Contact Center). If they do not have strong authentication, they can sign their applications and declarations on paper.



Documents

- Copy of your social security card;
- ADEM form “Personal information”, duly completed;
- CV;
- Income declaration and certificate of employment drawn up by the former employer;
- Copies of your 6 most recent pay slips;
- Diplomas (*including, as the case may be, a certification or recognition of a foreign diploma*).


The complete file is sent by the payment body to the *Office National de l'Emploi (ONEM)* within 2 months from the date of the application.

ONEM then has one month in which to communicate its authorisation for payment of the unemployment benefit.

- Copy of your identity card (residence permit);
- Certificate of employment and letter of dismissal;
- Carte de contrôle chômage complet;
- Form C1 – Declaration of family and personal situation;
- Form U1 certified by ADEM;
- Following a period of incapacity for work: Form C6 – Declaration of physical fitness;
- Certificate of registration with Forem;
- Bank account number.

Automatically at the time of the appointment communicated by *France Travail*.

- In principle, all necessary documents have already been sent by your former employer(s) and/or other social security organisations.
- If *France Travail* requires additional documents, you will be asked to upload them to your personal account.

By completing the form relating to the grant of unemployment benefit; this can be obtained from the **Agentur für Arbeit** or is available on its website ( www.arbeitsagentur.de).


- Form UI certified by ADEM;
- Certificate of employment drawn up by the employer.



Unemployment benefit



Conditions

- 
- Being involuntarily unemployed (*this excludes termination of the employment contract by mutual agreement, unjustified resignation and dismissal for serious misconduct*);
 - In the case of an internal professional redeployment, having lost one's job by reason of the employer's business closing down or on account of a mass layoff of employees;
 - Being at least 16 and not more than 64 years old;
 - Being fit for work, available on the job market and willing to accept any suitable employment;
 - Being registered as a jobseeker with ADEM;
 - Having been employed in one or more jobs for a minimum of 26 weeks, working at least a 16-hour week, over the 12 month period preceding registration as a jobseeker with ADEM. *Where there has been more than one employer, the person concerned must have lost one or more jobs involving at least 16 hours' working per week over a period of one month and the remaining income must be less than 150% of the social minimum wage (4.055,60 €, index: 968,04);*
 - Being resident in Luxembourg at the time of notification of dismissal in the case of an open-ended employment contract and at least 6 months before the end of the contract in the case of a fixed-term employment contract;
 - Not holding the position of manager, director, managing director or person in charge of the daily management in a company;
 - Not being the holder of a business permit.



Duration

- The duration of entitlement to payment of the benefit corresponds to the duration of working, calculated in whole months (*days worked in excess of one month are regarded as a whole month*), done over the course of the reference period;
- The maximum period of entitlement to unemployment benefit is 12 months per period of 24 months.



Amount

- 80% of the former gross salary received during the 3 months preceding the unemployment, but capped at 250% of the social minimum wage (SSM) during the first 6 months. After a further period of 6 months (reference period: 12 months), the amount is limited to 200% of the SSM and to 150% after 12 months.
- That 3-month period may be extended to 6 months and the rate may be 85% where the unemployed person has one or more dependent children.



Waiting time

- Entitlement to full unemployment benefit runs, at the earliest, from the first day of expiration of the employment relationship.
- Where the cessation of the employment relationship is due to the death, physical incapacity or declaration of bankruptcy of the employer, the employee is entitled to continue to receive payment of their salary for the month in which the event occurs and for the following month. The employee is also entitled to receive compensation corresponding to one half of the notice period to which they would have been entitled if they had been dismissed with notice (2 months, 4 months or 6 months). In such cases, the unemployment benefit starts to run, on average, 3 to 5 months after the discontinuance of the employer's business.



Extension

- An unemployed person aged > 50 years who has worked for 20 years may request an extension of 6 months;
- An unemployed person aged > 50 years who has worked for 25 years may request an extension of 9 months;
- An unemployed person aged > 50 years who has worked for 30 years may request an extension of 12 months;
- An unemployed person for whom it is difficult to find another job, in particular a person aged > 55 years, may be granted an extension of 6 months;
- An unemployed person who has been sent on internships, training courses or public service works may request an extension of 6 months.



Exclusion/Loss

- When the set limit for the duration of entitlement is reached;
- Where one or more conditions for granting the benefit are no longer fulfilled;
- Upon reaching the age limit of 65 years;
- If the person concerned turns down a suitable job offer without a legitimate reason;
- If the person concerned refuses without a legitimate reason to take part in internships, training courses or public service works assigned by ADEM;
- If the person concerned abandons their last job without a legitimate reason, save where this is justified on exceptional, valid and persuasive grounds;
- If the person concerned is dismissed for serious misconduct (*they may apply for advance payment of the full unemployment benefit where the dispute is the subject of legal proceedings and the final decision is pending*);
- If the person concerned fails without a valid excuse to attend the appointments with ADEM, they will lose entitlement to full unemployment benefit for 7 calendar days (*in the event of repeated failure to attend, payment will be suspended for 30 calendar days*);
- Entitlement will be irreversibly lost if the person concerned fails to turn up for 3 consecutive appointments as from the first day of non-attendance for the whole of the period still due.



The 2026 reform

Overview of the main changes:

- Unemployment benefits (based on salaried employment) are limited to a maximum of two years (12 basic months + 12 additional months depending on professional experience).
- Increased degressivity.
- Stricter eligibility conditions.
- For people who were already receiving benefits before July 2025, entitlement to benefits will be phased out gradually, in several successive waves, depending on the specific situation of the job seeker. Those affected have received/will receive their notification letter by post or via eBox.

Below are the provisions that apply if you become unemployed after 1st March 2026.



Conditions

- Proof of 312 days (1 year) of work or equivalent over a reference period of 36 months (3 years), regardless of age.
- The 36-month reference period may be extended in certain cases of compensated suspension: incapacity for work, accident at work, time credit, thematic leave, preventive detention.
- Periods equivalent to periods of work: public holidays, compensatory rest days, holidays covered by holiday pay, maternity/paternity/adoption leave, maternity rest, etc.
- To qualify for new unemployment benefits, days already used for a previous claim cannot be counted a second time.
- This also applies to voluntary part-time workers, with half-days being taken into account.



Duration

- 1 year of full unemployment benefit if you have worked for at least 1 year (312 days) during the 3 years preceding your claim.
- Thereafter, each additional period of employment lasting 4 months entitles you to 1 additional month of unemployment benefit, up to a maximum of 24 months in total.



Dérogations

Exemptions from the time limit on unemployment:

- Workers receiving unemployment benefits with a company supplement (RCC) (those in early retirement).
- Recipients of specific allowances in the arts sector.
- Workers with disabilities employed in sheltered workshops.
- Port workers, sea fishermen, fish unloaders or sorters recognised as fully unemployed.
- People aged 55 or over with at least 31 years of professional activity or equivalent periods. This threshold will gradually increase to 32 years in 2027, 33 years in 2028, 34 years in 2029 and 35 years in 2030.

Further information:

 www.onem.be/citoyens/chomage-complet

Amount*

Unemployed single person

Month	Minimum	Maximum
1 - 3	1.581,29 €	2.718,56 €
4 - 6	1.581,29 €	2.359,50 €
7 - 12	1.437,54 €	1.919,32 €
13 - 24	1.437,54 €	1.437,54 €

Cohabiting without family responsibilities

Month	Minimum	Maximum
1 - 3	1.522,30 €	2.718,56 €
4 - 6	1.405,06 €	2.359,50 €
7 - 12	1.277,38 €	1.919,32 €
13 - 24	745,94 €	745,94 €

Cohabiting with family responsibilities

Month	Minimum	Maximum
1 - 3	1.951,38 €	2.718,56 €
4 - 6	1.951,38 €	2.359,50 €
7 - 12	1.773,98 €	1.919,32 €
13 - 24	1.773,98 €	1.773,98 €

*Amounts as of 1st January 2026

Exclusion/Loss

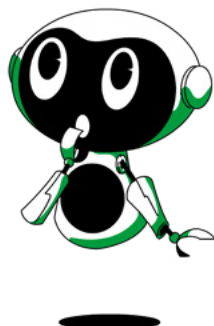
- Unavailability on the job market;
- Refusal of suitable employment;
- Failure to attend an interview with a potential employer;
- Termination or failure of the individual action plan due to the fault of the unemployed person;
- Leaving a job without legitimate reason (equivalent to resignation);
- Dismissal for misconduct attributable to the employee;
- Granting of unemployment benefits on the basis of incorrect or incomplete declarations.

Insertion allowance

Available after completing your studies under the following conditions:

- be aged between 18 and 25 and looking for work;
- no longer be subject to compulsory schooling;
- have completed a professional integration internship (total duration of 310 days excluding Sundays);
- have obtained at least two positive evaluations from your training organisation while actively seeking employment during the integration course.

This integration allowance is limited to 1 year and cannot be renewed.



! Conditions

- Being resident in France;
- Not having become voluntarily unemployed;
- Dismissal, even for serious misconduct or by reason of contractual severance;
- End of a fixed-term employment contract or an apprenticeship contract;
- Resignation on a ground subsequently found by a court to be justified and legitimate;
- Resignation in order to follow one's spouse who has been transferred elsewhere;
- Carrying out the actions agreed upon with the *France Travail* counsellor in the context of the individual job-seeking plan;
- Presenting oneself at appointments with their counsellor; for a medical examination or otherwise;
- Not twice turning down a reasonable job offer;
- Being available and physically fit to take up employment;
- Being actively looking for permanent employment or trying to set up or take over a business;
- Not having reached the statutory retirement age, or taken early retirement, or failed to pay sufficient contributions to draw a retirement pension;
- Having been registered as a jobseeker during the 12 months following the end of the employment contract;
- Updating one's situation each month by declaring one's income earned from gainful activity during the relevant period (this must be done between the 28th day of the month and the 15th day of the following month);
- Being able to show that one has been affiliated to the scheme for at least 130 days worked or 910 hours worked (in one or more jobs), i.e. for approximately 6 months over the course of a reference period of 24 months preceding the end of the employment contract for employees aged less than 55 years. That reference period is 36 months for employees aged 55 years or more.

Calculation of the duration

The duration of entitlement to employment benefit corresponds to the number of calendar days worked and not worked between the first and last days of the most recent employment contract, identified over the course of the last 24 months (for employees aged less than 55 years) or the last 36 months (for persons aged 55 years or more). The number of days taken as not having been worked is equal to a maximum of 70% of the days worked (multiplied by 1.4). Lastly, a coefficient of 0.75* is applied to the number of days worked and not worked, in order to determine the duration of entitlement to employment benefit. In the case of employment contracts ending before 1 February 2023, or dismissals the procedure for which was initiated before that date, this coefficient is no longer applied.

* The application of this coefficient is linked to the labour market situation. Given that the overall unemployment rate is currently below 9% and has not increased by 0.8% over one quarter, your benefit period is reduced by 25% (coefficient 0.75).

Whatever the situation, the duration of entitlement to employment benefit cannot be less than 182 days (6 months) or 152 calendar days if entitlement is based on seasonal employment contracts.

Further information:

 www.francetravail.fr/candidat/mes-droits-aux-aides-et-allocati.html



Maximum duration and extension

For employees under the age of 55:

- Maximum payment period = 548 days (18 months)
- Possibility of a supplement at the end of entitlement (CFD), depending on the employee's situation, for 182 days.
- Possibility of a training supplement (CFF), depending on the employee's situation (participation in a qualifying training course, registered in your PPAE and lasting 6 months or more).

For employees aged between 55 and 56:

- Maximum payment period = 685 days (22.5 months)
- Possibility of a supplement at the end of entitlement (CFD), depending on the employee's situation, for 228 days.
- Possibility of a training supplement (CFF), depending on the employee's situation (participation in a qualifying training course, registered in your PPAE and lasting 6 months or more).

For employees aged 57 or over:

- Maximum payment period = 822 days (27 months)
- Possibility of a supplement at the end of entitlement (CFD), depending on the employee's situation, for 273 days.
- Possibility of a training supplement (CFF), depending on the employee's situation (participation in a qualifying training course, registered in your PPAE and lasting 6 months or more).

For beneficiaries aged 62 or over: compensation may be maintained beyond the specified period under certain conditions (100 trimesters validated by the old-age insurance scheme and 12 years of membership of the unemployment insurance scheme or equivalent periods, including 1 continuous year or 2 years during the 5 years preceding the end of the employment contract).



Deferrals

Waiting period

The ARE (*allocation d'aide au retour à l'emploi*) cannot be paid before the end of a waiting period, fixed at 7 days. However, that waiting period is not applicable if it has already been applied in the previous 12 months.

"Compensation payment" deferral

This deferral is calculated by reference to sums received upon the termination of the employment contract (e.g.: redundancy pay, contractual severance pay, compensation for breach of contract, etc.). All such compensation payments which exceed the amounts provided for by law have the effect of postponing the commencement of payment of unemployment benefit, even where they involve compensation provided for by a collective agreement or a company agreement or sectorial agreement. To calculate the number of days of deferral, the amount of compensation exceeding that provided for by law must be divided by 109,6 (this value is the same for all). This deferral may never exceed 150 days (5 months) in all cases and 75 days

in the case of termination of the employment contract for economic reasons.

"Paid leave" deferral

This deferral is calculated by reference to the amount of compensation for paid leave not yet taken at the time when the employment contract comes to an end. To calculate the number of days of deferral, the compensation for untaken paid leave received during the last 6 months is divided by the amount of the employee's daily salary. This deferral may not exceed 30 days if the employment contract came to an end (or the dismissal procedure was initiated) on or after 1st October 2021.

These periods are cumulative, and all three of them may be applied if the applicable conditions are fulfilled. The deferrals in question are deferrals of the payment of unemployment benefit, that is to say, they postpone payment of the first instalment thereof to a date subsequent to the start date that would otherwise apply, but without shortening the duration of the period for which unemployment benefit is payable.



Amount

France Travail calculates the amount of the *allocation d'aide au retour à l'Emploi* (ARE) on the basis of the gross daily reference wage, which corresponds to the total remuneration received during the period used to calculate the duration of entitlement.

The gross daily amount of the ARE consists of:

- a fixed portion equal to 13,18 €;
- and a variable portion equal to 40.4% of the reference daily wage (SJR).

This amount cannot be less than 57% or more than 75% of the SRJ. The net amount of the ARE cannot be less than 32,13 €.

Degression

The degression of benefits applies if two specific conditions are met:

- The persons receiving compensation are under 55 years of age at the end of their employment contract (end of notice period) or under 57 years of age if the end of the employment contract falls before 1st April 2025.
- The reference daily wage exceeded a certain amount: 162,40 €/day, or 4.939,67 €/month (value as at 1st July 2025).

The reduction may be up to 30% within the limit of a minimum amount set at 92,57 € gross per day, i.e. approximately 2.777 € per month (value as at 1st July 2025).



Exclusion/ Loss

- Exhaustion of entitlement (end of the maximum duration of entitlement to benefit payments);
- No longer being registered as a jobseeker;
- Being sick, having an accident at work or being on maternity leave;
- Being in receipt of shared child-raising benefit or a daily parental presence allowance;
- Being in receipt of liquidated retirement benefit on account of having worked a lengthy career, being a worker with a disability, or having a permanent disability caused by arduous work or asbestos;
- Being fully retired;
- Failure to respect the obligations of a jobseeker, which include looking for a job and responding to job offers (please note that the usual salary in France is one of the factors taken into account when determining a reasonable job offer);
- Being in receipt of assistance in taking over or starting a business;
- Concluding a civic service contract;
- Undergoing professional training not covered by the PPAE;
- Ceasing to reside in France.

Further information:

 www.service-public.fr/particuliers/vosdroits/F14860



Conditions

- Being resident in Germany and not having reached the statutory retirement age;
- Being available on the job market;
- Be registered as a job seeker (via the digital service or in person at the agency);
- Being unemployed, but able to work for at least 15 hours per week;
- Having been affiliated to the social security system for a minimum of 12 months over the course of a reference period of 30 months' duration, known as "Anwartschaftszeit" (in the case of frequent fixed-term employment contracts, most of them having lasted for no more than 14 weeks, the waiting time is reduced to a minimum of 6 months over the course of the last 30 months);
- Making use of all job placement measures.



Duration

The duration of compensation varies according to the length of previous employment and the age of the unemployed person:

Duration of job(s) held during the previous 5 years	Age of the employed	Calendar months/ days
min. 12 months		6 months / 180 days
min. 16 months		8 months / 240 days
min. 20 months		10 months / 300 days
min. 24 months		12 months / 360 days
min. 30 months	> 50 years	15 months / 450 days
min. 36 months	> 55 years	18 months / 540 days
min. 48 months	> 58 years	24 months / 720 days



Extension

An extension may be granted where the person concerned has previously been in receipt of unemployment benefit over a reference period consisting of the last 5 years, but has not in the end exhausted their entitlement thereto, e.g. on account of having taken up a new job. In the event that the person in question becomes once again unemployed, that residual period may be added to the new unemployment period, up to a maximum of the maximum duration for the age of the person concerned (see the table set out above).



Amount

- 60% of the net monthly salary;
- 67% of the net monthly salary where the person concerned has one or more children.

The gross amount of the unemployment benefit is determined on the basis of the gross salary over the course of the last 12 months.

Calculator de

for unemployment benefit:

 [www.pub.arbeitsagentur.de/
start.html](http://www.pub.arbeitsagentur.de/start.html)



Waiting time

The unemployment benefit is paid, at the earliest, as from the first day of registration as a job-seeker and the date of the application to the *Agentur für Arbeit* for unemployment benefit.



Exclusion/ Loss

- Abandoning one's job without a legitimate reason;
- Refusal to accept and take up a suitable job;
- Unjustified refusal to take part in a job placement project;
- Failure to participate actively in the job-seeking exercise.

INFO-CENTER OFFICES

LUXEMBOURG

11, rue du Commerce
L-1351 Luxembourg
☎ +352 49 94 24-222

ESCH/ALZETTE

8, rue Berwart
L-4043 Esch/Alzette
☎ +352 54 90 70-1

ETTELBRUCK

47, avenue J.F. Kennedy
L-9053 Ettelbruck
☎ +352 81 90 38-1

DIFFERDANGE

19, avenue Charlotte
L-4530 Differdange
☎ +352 58 82 89

WASSERBILLIG

Place de la Gare
L-6601 Wasserbillig
† Reinaldo CAMPOLARGO
☎ +352 74 06 55
☎ +352 621 262 010



MERZIG

Saarbrücker Allee 23
D-66663 Merzig
☎ +49 (0) 68 61 93 81-778

THIONVILLE

1, place de la gare
F-57100 Thionville
☎ +33 (0) 38 28 64-070

ST. VITH

Centre culturel Triangel
Vennbahnstraße 2
B-4780 St. Vith
† Brigitte WAGNER
☎ +352 671 013 610

Consultation without an appointment!

Opening times on
www.lcgb.lu



Appointments still possible

via ✉ rdv@lcgb.lu

☎ +352 49 94 24 555

📄 YourLCGB.lu

Appointment mandatory for
tax service and tachograph
reading

CSC - ARLON

1, rue Pietro Ferrero
B-6700 Arlon
☎ +32 (0) 63 24 20 40

CSC - BASTOGNE

12, rue Pierre Thomas
B-6600 Bastogne
☎ +32 (0) 63 24 20 40

CSC - VIELSALM

5, rue du Vieux Marché
B-6690 Vielsalm
☎ +32 (0) 63 24 20 40

CSC - ST. VITH

Klosterstraße, 16
B-4780 St. Vith
☎ +32 (0) 87 85 99 32



LCGB SERVICES

Questions about our services

☎ +352 49 94 24-600

✉ services@lcgb.lu



MEMBERSHIP ADMIN.

Changing your contact details

☎ +352 49 94 24-421

✉ membres@lcgb.lu



LCGB INFO-CENTER

Consultation and information

☎ +352 49 94 24-222

✉ infocenter@lcgb.lu