

## Work on Public Holidays

### The employee who does not work on a public holiday

**A public holiday falling on a Sunday or a working day not usually worked :**

⇒ **one day of compensatory leave** to be taken within three months of the holiday

**A legal holiday falling on a working day normally worked :**

⇒ **remuneration** for the number of hours worked that would typically have been **with the day off**

### An employee who works on a public holiday

**A public holiday falling on a working day we worked :**

Remuneration of the hours worked on that day at the standard rate of pay

- + **compensation** of the hours which would have typically worked on that day
- + **increase of 100%** of the standard hourly rate for hours worked hours worked on that day



Standard remuneration	100 %
Remuneration of hours worked	100 %
+ Increase of 100% for hours worked on a public holiday	100 %
<b>TOTAL :</b>	<b>300 %</b>

**A public holiday falling on a working day not usually worked :**

Remuneration of the hours worked on that day at the standard hourly rate

- + **increase of 100%** of the standard hourly rate for hours actually worked on that day
- + **one day of compensatory** leave has to be taken individually within three months of the public holiday
- + possibly an increase or compensatory rest if it concerns overtime



Remuneration of hours actually worked	100 %
+ Increase of 100% for hours worked on a public holiday	100 %
1 jour de congé compensatoire	1 day
<b>TOTAL :</b>	<b>200 % + 1 day</b>

**A public holiday falling on a Sunday :**

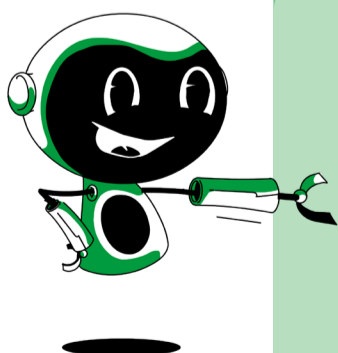
Remuneration of the hours worked on that day at the normal hourly rate

- + **increase for public holidays of 100%** of the standard hourly rate for hours worked on that day
- + **additional charge for Sunday work of 70%** of the standard hourly rate for hours worked on that day
- + **one day of compensatory** leave has to be taken individually within Three months following the holiday
- + possibly an increase or compensatory rest if it concerns overtime



Remuneration of hours actually worked	100 %
+ Increase of 100% for hours worked on a public holiday	100 %
+ Increase of 70% for hours worked on a Sunday	70 %
One day of compensatory leave	1 day
<b>TOTAL :</b>	<b>270 % + 1 day</b>

### Public holidays in Luxembourg



New Year's Day (1 January)  
Easter Monday  
Labour Day (1 May)  
Europe Day (9 May)  
Ascension Day  
Whit Monday

National Holiday (23 June)  
Assumption (15 August)  
All Saints' Day (1 November)  
Christmas Day (25 December)  
Boxing Day (26 December)